

SAC Meeting Minutes March 6, 2025

Attendees: Mendy Nelson, George Miller, Regina Notarianni, Tonya Player, Lois Skaf (Teams)

Meeting was called to order at 3:35 pm by Mrs. Nelson

3:35 Welcome:

- Mrs. Nelson greeted our SAC Chairpeople and thanked them for attending

3:36 Review of Meeting Minutes from January:

- Tonya Player approved and Regina Notarianni seconded the motion

3:37 PIE progress monitoring data (PM2) :

- [3/6/25 SAC Meeting - Mid-Year Data Chat Info](#) (snapshots of slides below)
- Mrs. Nelson shared the data from the following slides:

Elementary: Expected Performance



Significantly Above District Average	Slightly Above District Average	Equal To District Average	Slightly Below District Average	Significantly Below District Average
--------------------------------------	---------------------------------	---------------------------	---------------------------------	--------------------------------------

Ranking	Schools	Overall Gap	G03 ELA	G04 ELA	G05 ELA	G03 Math	G04 Math	G05 Math
1	Pine Island Elementary	+5%	-3%	-6%	+14%	+11%	+3%	+14%
T2	Caloosa Elementary	+3%	+5%	+3%	+2%	-1%	+2%	+7%
T2	Pelican Elementary	+3%	-6%	-1%	+6%	+8%	+3%	+8%
T2	Gulf Elementary	+3%	+3%	--	+5%	+4%	-1%	+5%
T5	Diplomat Elementary	+2%	+5%	-1%	+4%	+4%	-3%	+4%
T5	Cape Elementary	+2%	-1%	+5%	-1%	+4%	+4%	-2%
7	Trafalgar Elementary	+1%	+5%	--	+1%	+2%	-3%	+1%
8	Littleton Elementary	--	+2%	+2%	-6%	--	--	+1%
9	Hancock Creek Elementary	-1%	+7%	-4%	-5%	+4%	-5%	-5%
T10	Hector A Cafferata Jr Elem	-4%	-5%	-5%	-3%	-2%	-3%	-3%
T10	Skyline Elementary	-4%	-5%	-3%	--	-4%	-5%	-4%
T10	Patriot Elementary	-4%	-5%	--	+1%	-8%	-1%	-10%

District analysis of the elementary school performance data:



Performance Rankings

- **Pine Island Elementary tops the chart with +5% overall gap**
- Caloosa, Pelican, and Gulf Elementary tie for 2nd place with +3% overall gap
- Patriot, Skyline, and Hector A Cafferata Jr Elementary rank lowest

ELA

- **Significant variations across grades (G03, G04, G05)**
- Hancock Creek shows best G03 ELA performance (+7%)
- **Multiple schools show negative performance in G03 and G04 ELA**

Math

- **Pine Island Elementary excels, especially in G05 ELA, G03 Math, and G05 Math**
- Patriot Elementary struggles, particularly in G05 Math (-10%)
- **Consistent mixed performance across different grade levels**

Key Observations

- **No school maintains consistently high or low performance across all grades**
- **Performance gaps vary significantly between subjects and grade levels**
- Most schools show moderate performance deviations from district average

Elementary School Grade Overview



FLDOE 23-24 School Grade: <https://www.fldoe.org/accountability/accountability-reporting/school-grades/>

	English Language Arts Achievement Gr 3	English Language Arts Achievement Gr 3-4-5	English Language Arts Learning Gains	English Language Arts Learning Gains of the Lowest 25%	Math Achievement	Math Learning Gains	Math Learning Gains of the Lowest 25%	Science Achievement	Total Points Earned	Percent of Total Possible Points	Prelim Grade
23-24	60%	55%	43%	32%	64%	53%	26%	58%	402	50.25%	C
24-25 PM1	27% (PY18%)	26% (PY 24%)	21% (PY 15%)	39% (PY 5%)	12% (PY 5%)	8% (PY 1%)	6% (PY 0%)	37% (PY N/A)	176	22.00% (2.05%+)	F
24-25 PM2	46% (PY 28%)	37% (PY 35%)	37% (PY 33%)	44% (PY 37%)	33% (PY 30%)	15% (PY 13%)	17% (PY 21%)	3/10/25 (PY 32%)	266	33.25% (3.34%+)	D
24-25 PM3	78%	51%	45%	49%	69%	55%	23%	63%	433	54.13% (2.32%+)	B

The number of points earned for each component is added together and divided by the total number of available points to determine the percentage of points earned. School Grading Scale: A = 62% of points or greater, B = 54% to 61% of points, C = 41% to 53% of points, D = 32% to 40% of points, F = 31% of points or less.



ELA FAST PM1 and PM2 School Grade Outcomes

	EOY Target	PY PM3	Progress Monitoring 1	Progress Monitoring 2	Progress Monitoring 3
ELA 3rd	59%	60%	26%	44% (+10% PY PM2)	TBD
ELA 4th	57%	50%	26%	27% (-7% PY PM2)	TBD
ELA 5th	52%	56%	28%	44% (+11% PY PM2)	TBD
ELA 3rd - 5th	55%	55%	26%	37% (+2% PY PM2)	TBD
ELA LG <i>Includes 3rd Retainees</i>	65%	43%	21%	37% (+4% PY PM2)	TBD
ELA L25 LG <i>Includes 3rd Retainees</i>	58%	32%	39%	44% (+7% PY PM2)	TBD

●

Math FAST PM1 and PM2 School Grade Outcomes



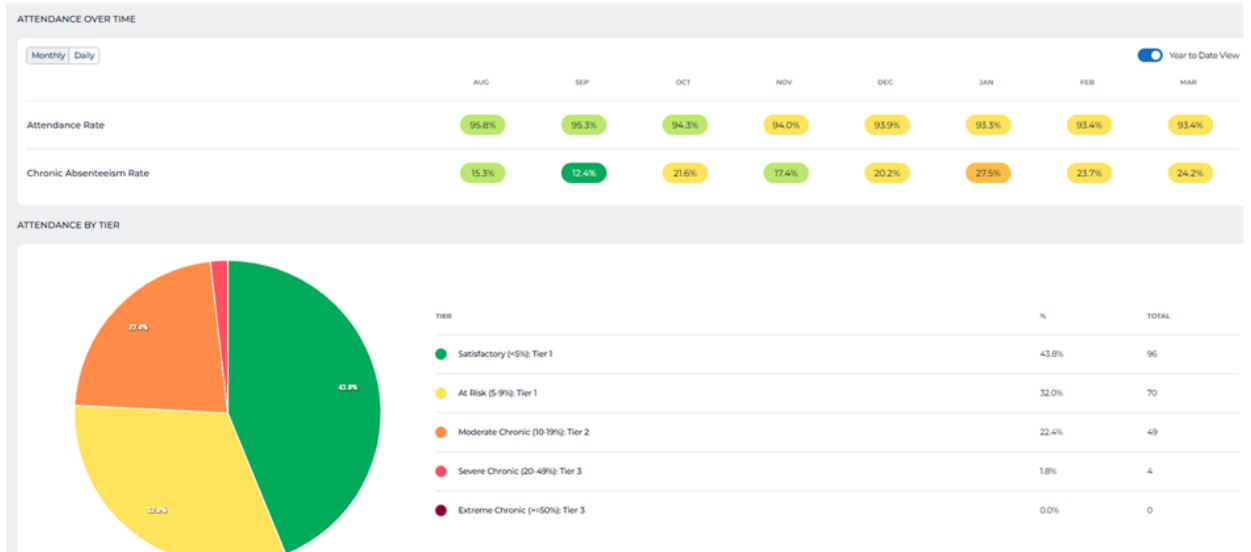
	EOY Target	PY PM3	Progress Monitoring 1	Progress Monitoring 2	Progress Monitoring 3
Math 3rd	72%	55%	10%	38% (+14% PY PM2)	TBD
Math 4th	58%	65%	8%	17% (-7% PY PM2)	TBD
Math 5th	71%	71%	18%	44% (+8% PY PM2)	TBD
Math 3rd to 5th	65%	64%	12%	33% (+3% PY PM2)	TBD
Math LG <i>Includes 3rd Retainees</i>	69%	53%	8%	15% (+2% PY PM2)	TBD
Math L25 LG <i>Includes 3rd Retainees</i>	56%	26%	6%	17% (-4% PY PM2)	TBD
Science 5th	61%	58%	37% (+5% PY PM2)	PM2: 3/10/25	TBD

●

3:50 EVERYDAY Labs Attendance:

- This is a program that monitors attendance
- Below is a screenshot of what information this program provides
- It shows attendance rate, chronic absenteeism rate, trends of absences, tardies etc...
- Dr. G is meeting with parents of chronically absent students to come up with strategies to get those students to school.

- Dr. G has been meeting one on one with students in 4th and 5th grade to share their attendance and their state scores, grades etc...most students are stating that they didnt put the effort in for PM1 and PM2.



3:58 PIE Tutoring Program:

- We have about 6 more weeks for tutoring
- We target 3rd-5th grade students (Monday and Wednesday)
- Targeted groups

4:00 Upcoming Events:

- Read Across America Day March 7th
 - We have a lot of readers from the community coming to read to our students
 - Nichole Pichon made some beautiful mobiles K-5 students created to give as a gift to the readers. Thank you Nichole for ALWAYS going above and beyond!
 - Tonya wore the K hat to Kiwanis and made the participants sing happy birthday to Dr. Seuss
- Springfest March 7th 4:30-7PM

- Vocabulary Parade April 4th (9am)
 - A fun way for students to wear a fantastic vocabulary word and bring excitement to April
- Bobby Holloway Jr. Memorial Fishing Tournament April 5th

4:01 DAC Meeting Updates (January and February):

THANK YOU GEORGE!!!! YOU ARE AMAZING!!

Proposed Changes Regarding Electronics/Telecommunications Devices (ETD)

Students may possess personal wireless communication devices (WCDs) while on school grounds during regular school hours. This includes, but is not limited to, cell phones and auxiliary/ancillary devices such as watches or earbuds. All personal WCDs must be turned off and in the student's book bag at all times ~~unless utilized for an approved activity~~. At the high school level, and at the discretion of school administration, WCDs may be permitted in non-instructional spaces, such as cafeterias. At all levels, WCDs are permitted when the device is approved by the school, and used to monitor a health condition that is documented through medical records.

As of 7/1/23, the following meet the criteria for prohibited applications as established in Section 112.22(1)(f), F.S.: QQ, TikTok, WeChat, VKontakte, Kaspersky. See Board Policy 5136.

Current Electronics/ Telecommunications Devices Policy



Electronics/Telecommunications Devices (ETD)

Students may possess cell phones and other personal electronic devices (including, but not limited to, cell phones and/or auxiliary/ancillary devices such as watches and earbuds) while on school grounds during regular school hours. However, they must be turned off at all times unless utilized for an approved activity.

Possession of all personal electronic devices, including cell phones, is at the student's own risk, and the school assumes no responsibility, legal or otherwise, with regard to these items. As of 7/1/23, the following meet the criteria for prohibited applications as established in Section 112.22(1)(f)*, F.S.: QQ, TikTok, WeChat, VKontakte, Kaspersky. See Board Policy 5136.

Proposed Updates for the 2025-2026 Code of Conduct



Update Branding, Board Membership, and Superintendent Information

Separate Disrespect/Insubordination into Two Infractions

- **Current Definition:** Any deliberate and overt refusal or failure to adhere to explicit directives, instructions, or commands issued by school personnel, including teachers, administrators, or any designated authority figures. This encompasses acts of defiance, disobedience, or resistance to established rules, policies, or regulations within the school community.
- **Proposed Disrespect:** Any deliberate and overt action, including verbal and non-verbal, with the intent to interrupt, undermine, or disregard established classroom and/or campus rules and procedures required for the safe and orderly operation of schools. This encompasses acts considered impolite, rude, or offensive, that demean, degrade, antagonize, or humiliate a person or group.

Proposed Updates for the 2025-2026 Code of Conduct, (cont'd)



Amend Consequences for Drug Use/Possession

- **Current Code:** Infraction School-Level Response
 - First - Level III with up to 3 days OSS OR up to 2 days OSS and 1 day ISS with completion of anti-drug and alcohol programming
 - Second - Level III with up to 5 days OSS OR up to 4 days OSS and completion of extended school day anti-drug and alcohol programming with parent participation
 - Third - Level II w/ Success Academy assignment
- **Proposed Amendment:** Infraction School-Level Response
 - First - Level III with up to 3 days OSS OR up to 2 days OSS and 1 day ISS with completion of anti-drug and alcohol programming. *For a first offense with additional considerations, consult with the Executive Director of Student Services/Designee.*
 - Second and Repeated - Level II

-
-

Proposed Updates (cont'd)



Amend Consequences to Sexual Offenses

- **Current Code**
 - First - Level III
 - Repeated - Level III (with SARC review)
- **Proposed Amendment**
 - Minor First - Level III
 - Minor Repeated - Level III (with SARC review)
 - Major - Level II



Changes to the Electronic/Telecommunications Devices Section

-

Proposed Updated (cont'd)

Update Weblinks and QR Codes to Ensure Functionality

Amend Consequences for Bullying

- **Current Code:**

Level IV

- **Proposed Amendment:**

Level III (which includes the option for a SARC review and potential placement at Success Academy)



Updated Proposal

Tier 1

All High Schools (282**)

Student Times 7:00 a.m. to 2:00 p.m.

*Staff Times 6:45 a.m. to 2:15 p.m.

47 min period - 49 min

49-Minute Period

30-Minute Lunch ✓

★

All K-8 Schools (54)

Skyline Elementary (13) & Hector A. Cafferata, Jr. Elementary (7)

Student Times 7:30 a.m. to 2:00 p.m.

*Staff Times 7:00 a.m. to 2:30 p.m.

MS/47-Minute Period

30-Minute Lunch ✓

Tier 2

All Elementary Schools (404), Young Parent Education Program

Student Times 8:40 a.m. to 3:10 p.m.

*Staff Times 8:00 a.m. to 3:30 p.m.

30-Minute Lunch ✓

Tier 3

All Middle Schools (281), Success Academy (12)

Buckingham Exceptional Student Center (9)

Royal Palm Exceptional Center (10)

Student Times 9:45 a.m. to 4:15 p.m.

*Staff Times 9:15 a.m. to 4:45 p.m.

47-Minute Period

30-Minute Lunch ✓

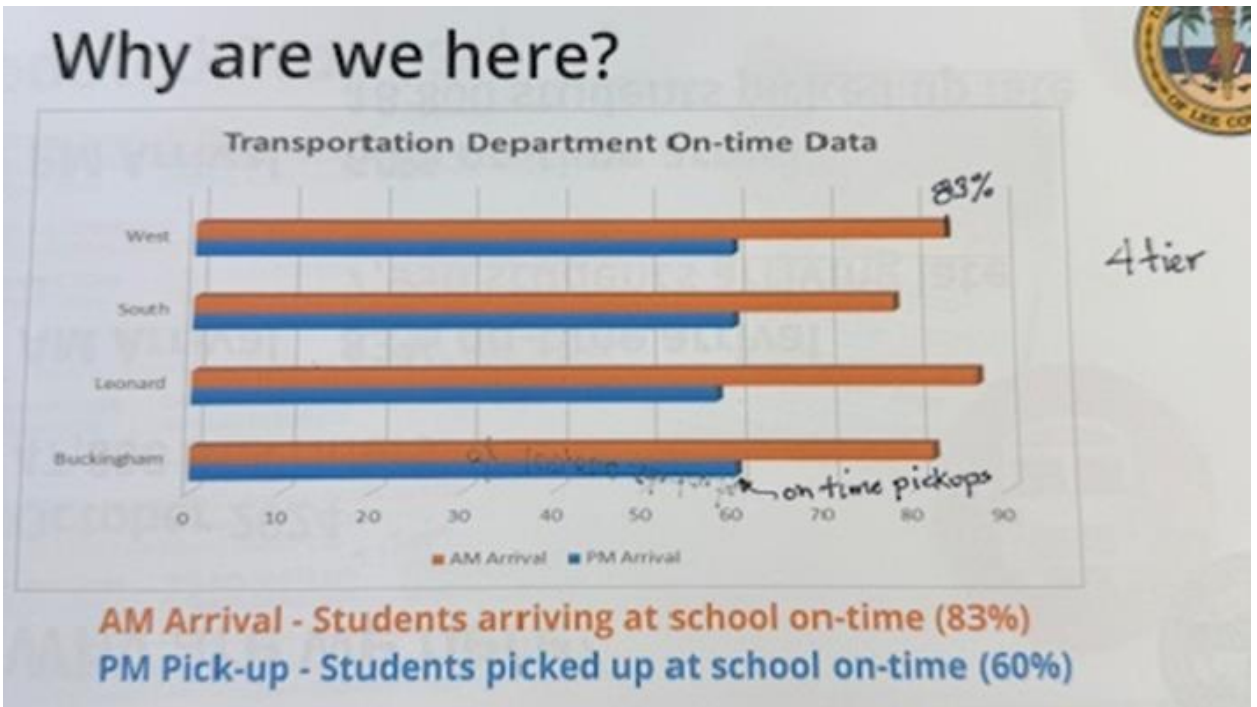
+ 15 min

*Staff contract times may vary based on staff and worksite needs.

**Numbers in parentheses indicate the number of bus routes at each level.



- This will not start until the 2026/2027 (possible modifications to be made by then)



● **4:10** Good of the Order

- Island Fest Mullet Toss at the ball field on March 15th

Motion to adjourn at 4:11 by Regina Notarianni, Tonya Player seconded.

Next SAC Meeting: April 10, 2025